



Portal Close, Middlesex, UB10 0FE

A GREAT SIZE TWO DOUBLE BEDROOM TWO BATHROOM APARTMENT. This spacious property benefits from Gas central Heating, Double Glazing, One Allocated Parking Space and communal gardens. The property is located within walking distance to Uxbridge Town Centre, with a wide variety of shops, eateries and rail links(Metropolitan/Piccadilly lines).





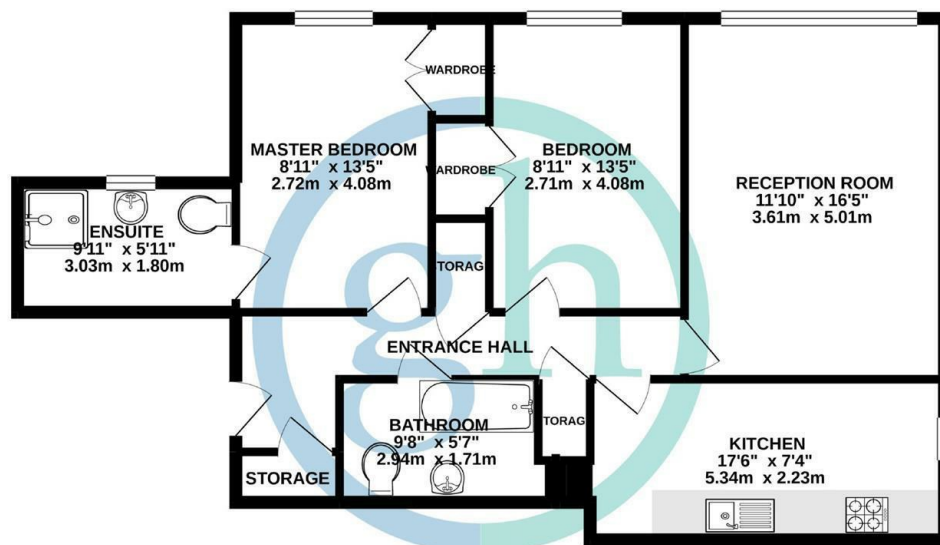
92 High Street, Ruislip, Middlesex, HA4 8LS

T: 01895 625999

lettings@gibsonhoney.co.uk

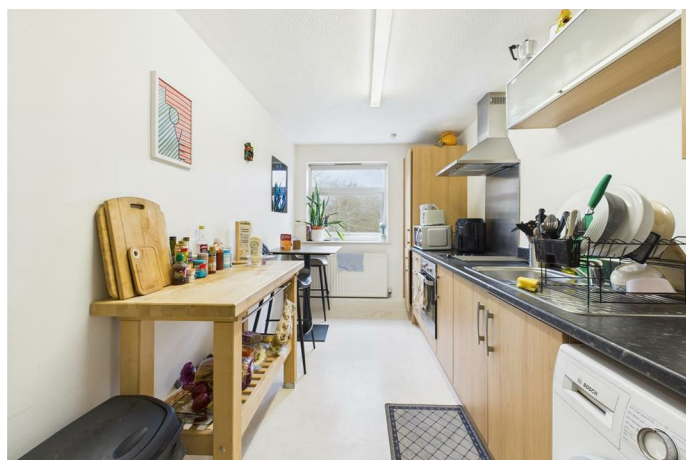
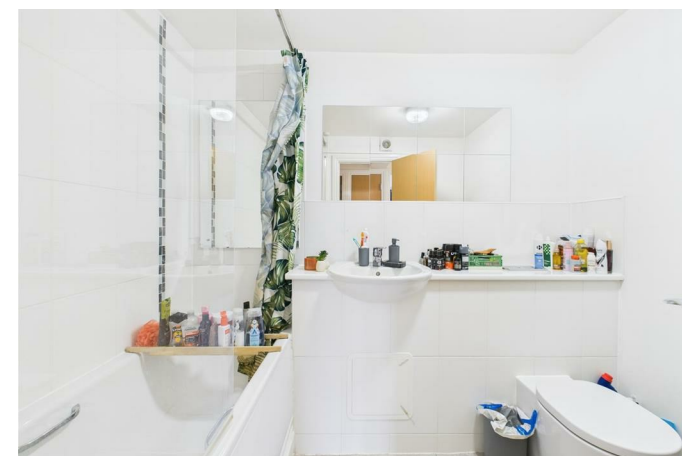
www.gibsonhoney.co.uk

GROUND FLOOR 795 sq.ft. (73.8 sq.m.) approx.



TOTAL FLOOR AREA - 795 sq.ft. (73.8 sq.m.) approx.
Whilst every attempt has been made to ensure the accuracy of the floorplan contained here, measurements of doors, windows, rooms and any other items are approximate and no responsibility is taken for any error, omission or mis-statement. This plan is for illustrative purposes only and should be used as such by any prospective purchaser. The services, systems and appliances shown have not been tested and no guarantee as to their operability or efficiency can be given.
Made with Metropix ©2020

Energy Efficiency Rating		
	Current	Potential
Very energy efficient - lower running costs		
(92 plus) A		
(81-91) B		
(69-80) C	79	79
(55-68) D		
(39-54) E		
(21-38) F		
(1-20) G		
Not energy efficient - higher running costs		
England & Wales	EU Directive 2002/91/EC	



You may download, store and use the material for your own personal use and research. You may not republish, retransmit, redistribute or otherwise make the material available to any party or make the same available on any website. These particulars, whilst believed to be accurate are set out as a general outline only for guidance and do not constitute any part of an offer or contract. Intending purchasers should not rely on them as statements or representation of fact, but must satisfy themselves by inspection or otherwise as to their accuracy. No person in this firms employment has the authority to make or give any representation or warranty in respect of the property.